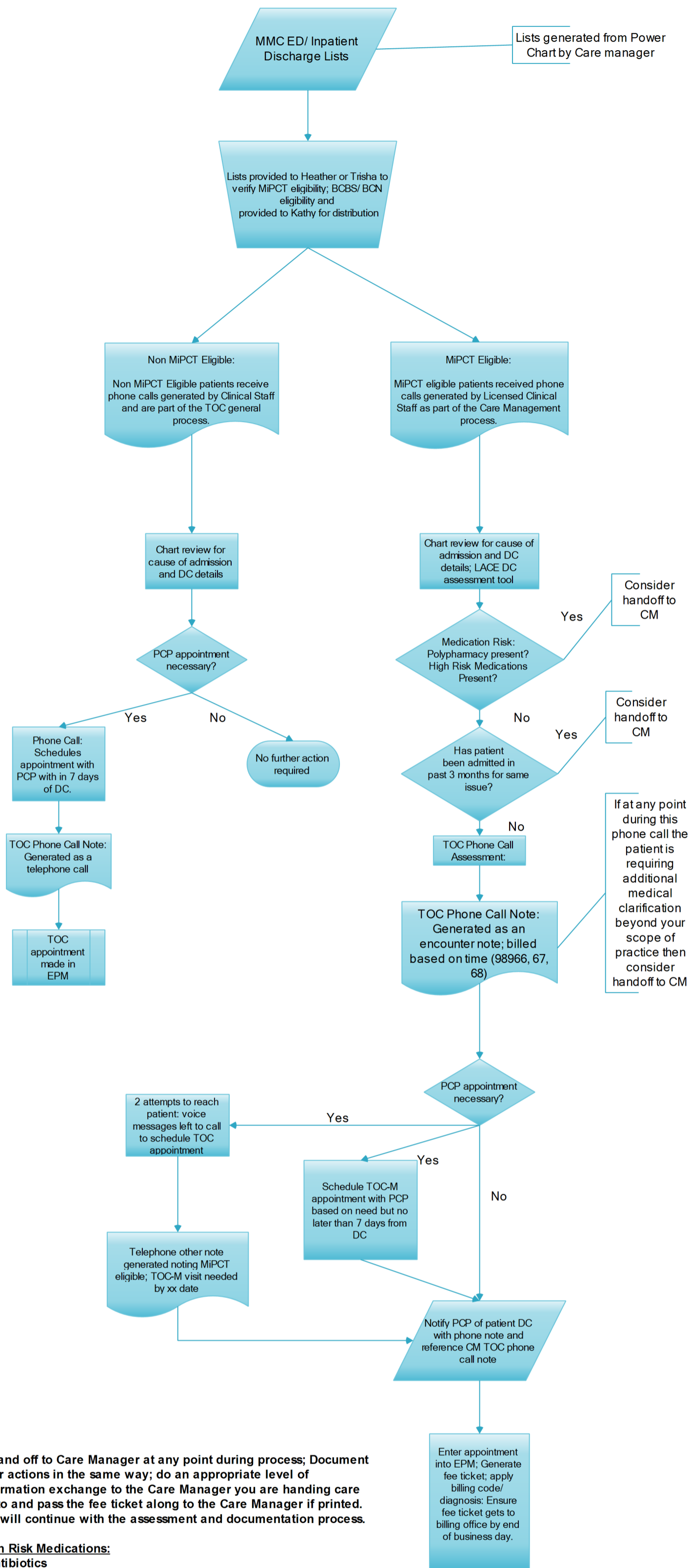


**WFPC Transitions of Care: Process Flow Diagram**



If Hand off to Care Manager at any point during process; Document your actions in the same way; do an appropriate level of information exchange to the Care Manager you are handing care off to and pass the fee ticket along to the Care Manager if printed. CM will continue with the assessment and documentation process.

**High Risk Medications:**

- Antibiotics
- Glucocorticoids
- Anticoagulants
- Narcotics
- Antiepileptics
- Antipsychotics
- Antidepressants
- Hypoglycemic agents

**Polypharmacy** = more than 5 medications being taken.